

A new commercial landmark
to add to the beauty of
Pink city

NBCC CENTER *jaipur*



Reliability of a Navratna Government of India Enterprise

About NBCC

NBCC (A Navratna CPSE) started its journey in 1960 under the tutelage of the erstwhile Ministry of Urban Development. The company majorly deals in Project Management Consultancy (PMC), Real Estate Development and EPC Contracting. It also delivers civil engineering construction services in diversified areas. Over the years, the company has established a niche for itself in the construction business across India.

About the Project

- The first ever project in Pink City Jaipur by NBCC.
- Prime location on Sahakar Marg, Lal Kothi Scheme.
- Spread over an expansive area of 1318.27 sq.m., this is the pivotal location where your business can flourish.
- Good connectivity with important modes of communication like Railway Station, Bus Stand and Airport.
- Close proximity to established commercial and institutional developments of the city.
- 0.50 km away from Vidhan Sabha and 0.75 km away from Sawai Mansingh Stadium.
- Double Basement with ample parking.



Key Plan Location Map



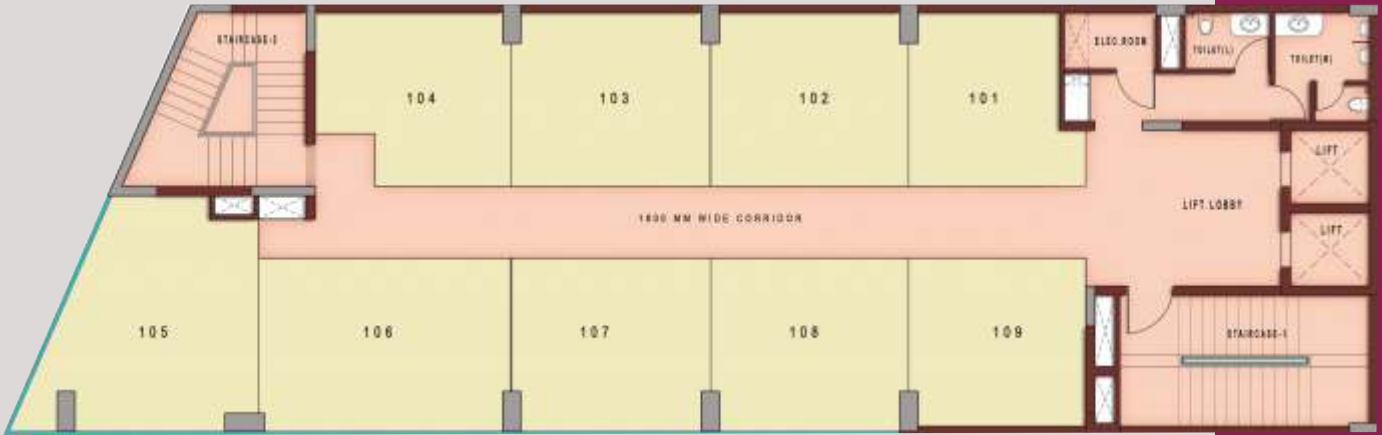
Ground Floor Plan



Details of Saleable Area

| Shop Nos. | Covered Area (SFT) | Saleable Area (SFT) |
|-----------|--------------------|---------------------|
| G1 | 929 | 1426 |
| G2 | 670 | 1029 |
| G3 | 661 | 1015 |
| G4 | 467 | 717 |

1st Floor Plan



Details of Saleable Area (1st Floor)

| Shop Nos. | Covered Area (SFT) | Saleable Area (SFT) |
|-----------|--------------------|---------------------|
| 101 | 244 | 388 |
| 102 | 320 | 510 |
| 103 | 320 | 510 |
| 104 | 289 | 460 |
| 105 | 419 | 668 |
| 106 | 340 | 542 |
| 107 | 310 | 494 |
| 108 | 310 | 494 |
| 109 | 275 | 440 |

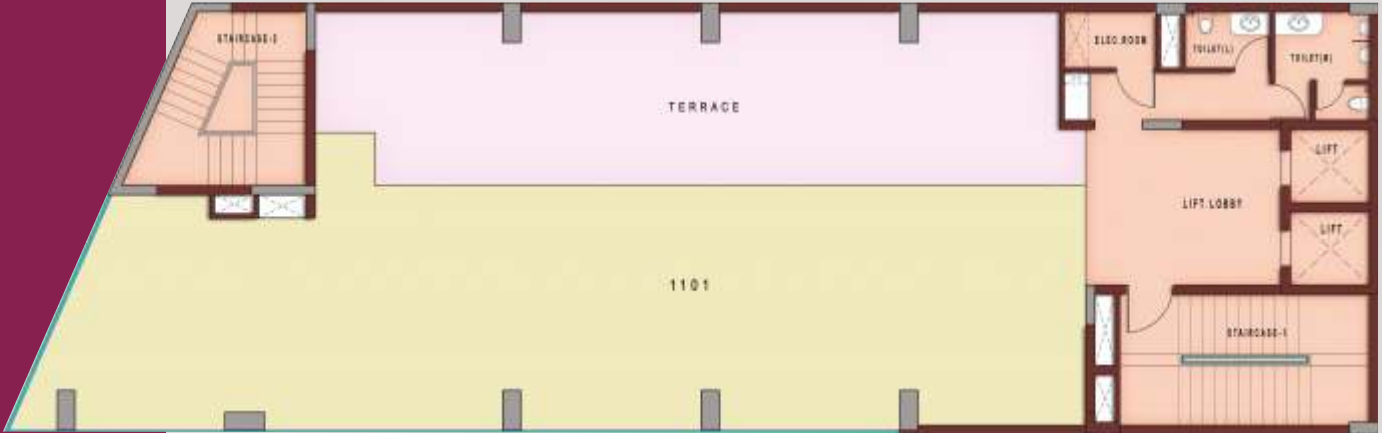
Details of Saleable Area (2nd to 10th Floor)

| Floor | Covered Area (SFT) | Saleable Area (SFT) |
|-------|--------------------|---------------------|
| 2nd | 3291 | 4590 |
| 3rd | 3291 | 4590 |
| 4th | 3291 | 4590 |
| 5th | 3291 | 4590 |
| 6th | 3291 | 4590 |
| 7th | 3291 | 4590 |
| 8th | 3291 | 4590 |
| 9th | 3291 | 4590 |
| 10th | 3291 | 4590 |

2nd to 10th Floor Typical Plan



11th Floor Plan



Details of Saleable Area

| Floor | Covered Area (SFT) | Saleable Area (SFT) |
|-------|--------------------|---------------------|
| 11th | 2014 | 3156 |

Proposed Specification

| | |
|------------------------------------|---|
| Structure | RCC Frame Structure |
| Finishing | |
| Commercial Shops and Offices | : Bare-Shell Cement Plastered wall & CC Floor |
| Toilets | : Anti skid ceramic tiles |
| Staircase | : Kota Stone with M.S. Hand Rail |
| Common Corridors/Lift Lobby | : Vitrified Floor Tiles (Granite finish shade) |
| Basemnt/Ramp | : IPS Floor/Chequered Tiles |
| Doors Shutter | : Shutters for Ground Floor Shops |
| External Doors/Windows | : Anodized Aluminum Windows & Flush door shutters in office |
| Internal Wall & Ceilling | : White Wash |
| External Façade | : Structured glazing/textured surface/plaster with combination of sand stone |
| Chinaware & CP Fittings Electrical | : Concealed Steel/PVC conduits with copper wiring and circuit with Modular Switches |

Disclaimer: Visual representation shown in the brochure are purely conceptual & has no legal sanctity & is not a legal offering. All building plans, specifications, area, layout plans etc. shown in the brochure are provisional & are subject to change by the company & sanctioning / statutory authorities.

1 sqm = 10.764 sft.

A glimpse of NBCC Real Estate projects



NBCC Imperia, Bhubaneswar



NBCC Tower, Patna



NBCC Town-II, Khekra, U.P.



NBCC Center, New Delhi



NBCC Green View, Gurgaon



NBCC Town-I, Khekra, U.P.



NBCC Heights, Gurgaon



National Buildings Construction Corporation Limited

(A Government of India Enterprise)

Office of General Manager (REM)

NBCC Place, Bhishma Pitamah Marg, Pragati Vihar, New Delhi- 110003

Tel. : 011-46990020, Email : mktgre.nbcc@nic.in, www.nbccindia.gov.in